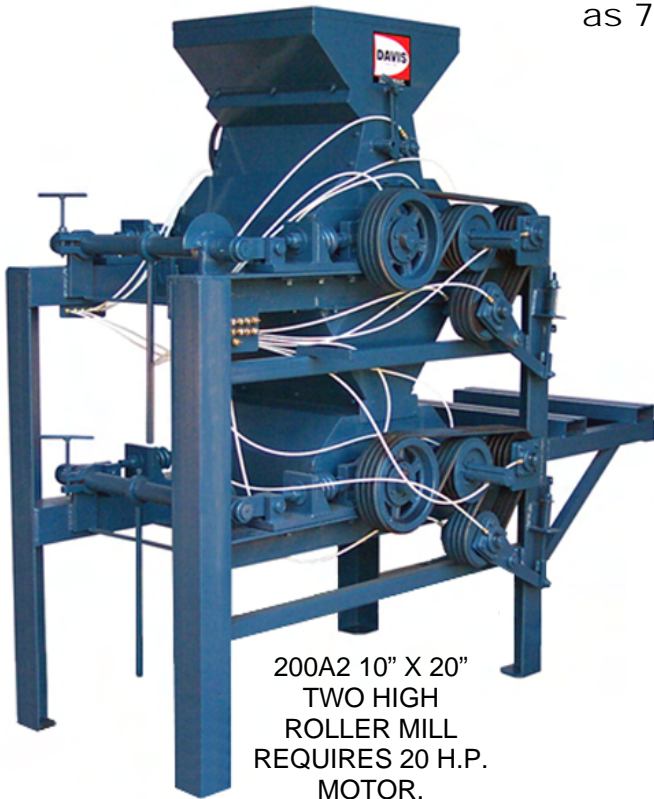


DAVIS
SINCE 1894

TWO HIGH ROLLER MILLS

H. C. DAVIS SONS MANUFACTURING CO., INC.
Manufacturers of Quality Machinery Since 1894

We offer Roller Mills with capacities from 2 to 36 tons per hour. They are built with two pair of rolls with each pair equipped with a speed differential drive, and will grind corn, wheat and milo down to an average particle size as small as 700 micron.



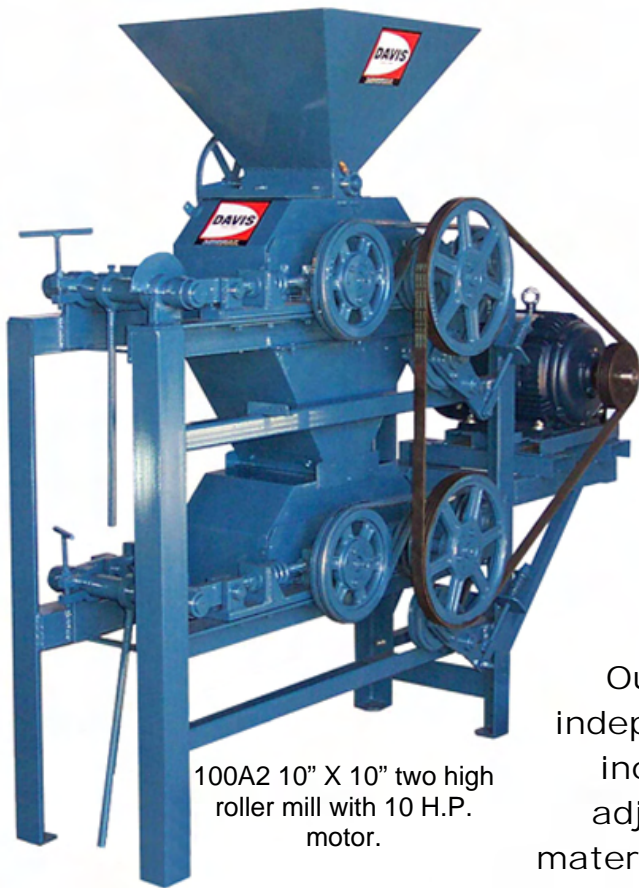
200A2 10" X 20"
TWO HIGH
ROLLER MILL
REQUIRES 20 H.P.
MOTOR.

Model 300A2 Heavy Duty Two High Roller Mill with 30 H.P. motor (right) is equipped with the same rolls as the above Model 200A2, 10" x 20", and is built with heavy plate frame, heavy duty roller bearings and 6 groove speed differential drive. It is designed to operate 12+ hours per day.

Ideal for feeding Poultry, Pork and Dairy, your target particle size can be achieved by adjusting the gap between the rolls. To adjust the gap the operator moves the lever attached to the eccentric shaft, which keeps the rolls parallel, and allows the rolls to be adjusted to within .006".



DAVIS TWO HIGH ROLLER MILLS



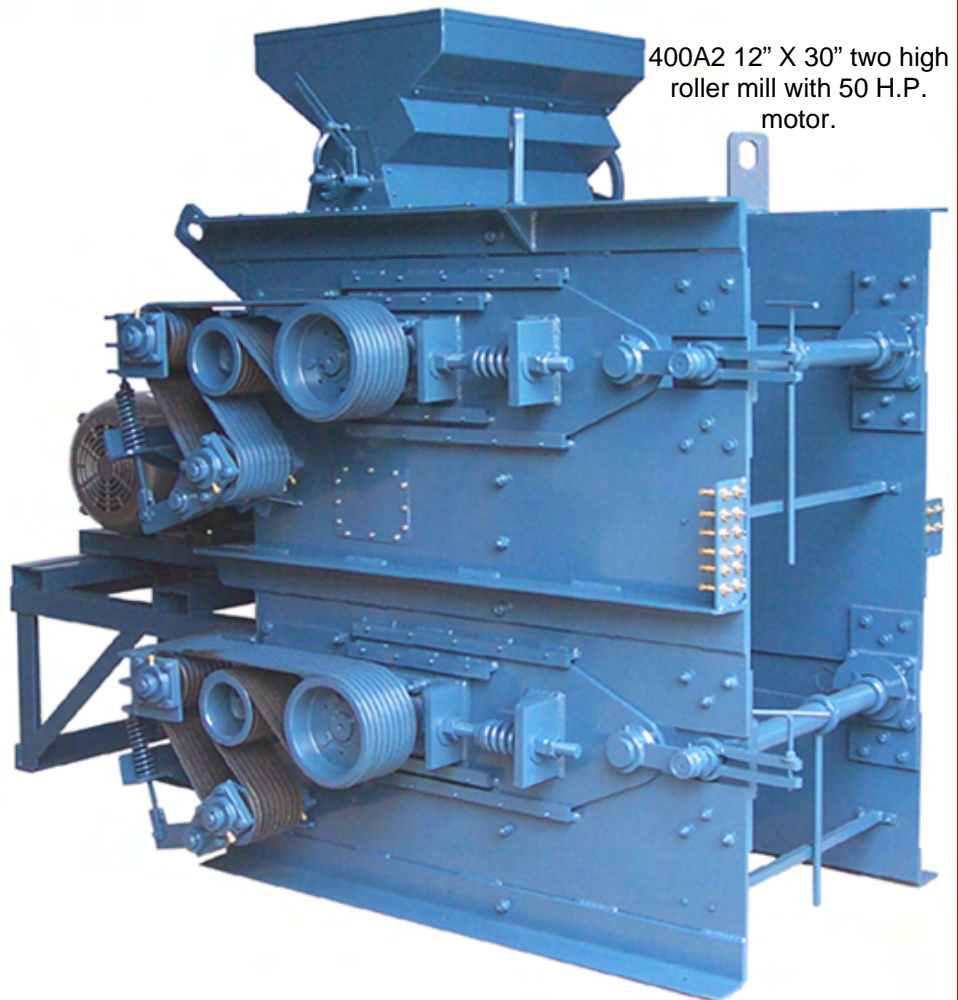
100A2 10" X 10" two high roller mill with 10 H.P. motor.

Roller Mills offer several distinct advantages over Hammer Mills:

- When compared to a hammer mill, our roller mills offer greater particle size consistency and fewer dust and fines
- The roller mill is also approximately 30 to 50% more energy efficient than the hammer mill.
- Roller mills heat up the cereal grains less than hammer mills, resulting in less moisture loss.
- Roller mills produce much less dust and noise than hammer mills.

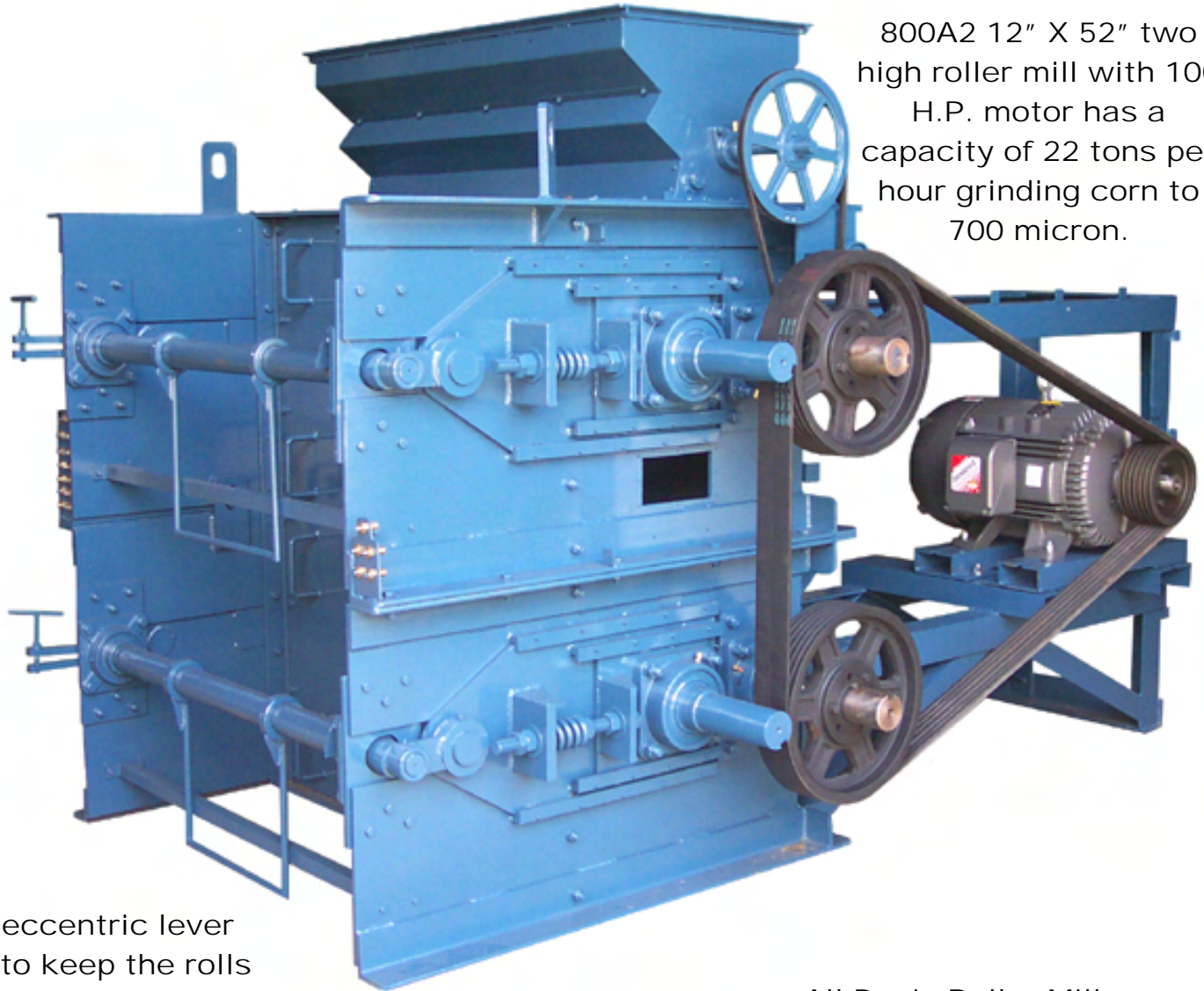
Our 1 ½ to 1 speed differential drive operates independently on each pair of rolls. The belt drives include a spring-mounted idler to allow for roll adjustment and movement in case hard foreign material such as rocks or tools pass through the mill.

Davis Roller Mills are equipped with an intake hopper with flow control gate. The gate is usually manually operated but can be equipped with an air cylinder for completely automated systems. On all roller mills, except the 100A2, we also provide an agitator feeder to spread the grain across the rolls evenly and help prevent clogging in the throat due to stalks, grass and other foreign material mixed in with the grain. The agitator feeder is offered as an option on the 100A2.



400A2 12" X 30" two high roller mill with 50 H.P. motor.

DAVIS TWO HIGH ROLLER MILLS



800A2 12" X 52" two high roller mill with 100 H.P. motor has a capacity of 22 tons per hour grinding corn to 700 micron.

The eccentric lever used to keep the rolls parallel and change the roll gap is also used to quickly clear the mill if it should clog. The rolls can be quickly returned to the appropriate operating position with the gauge and pointer.

Davis 10' Auger



We offer loading and unloading augers for all Davis Roller Mills.

All Davis Roller Mills are built with spring release roll protection that will allow the rolls to separate when hard foreign materials such as rocks or tools pass through the mill. This is a very important feature for a roller mill to provide many years of service.

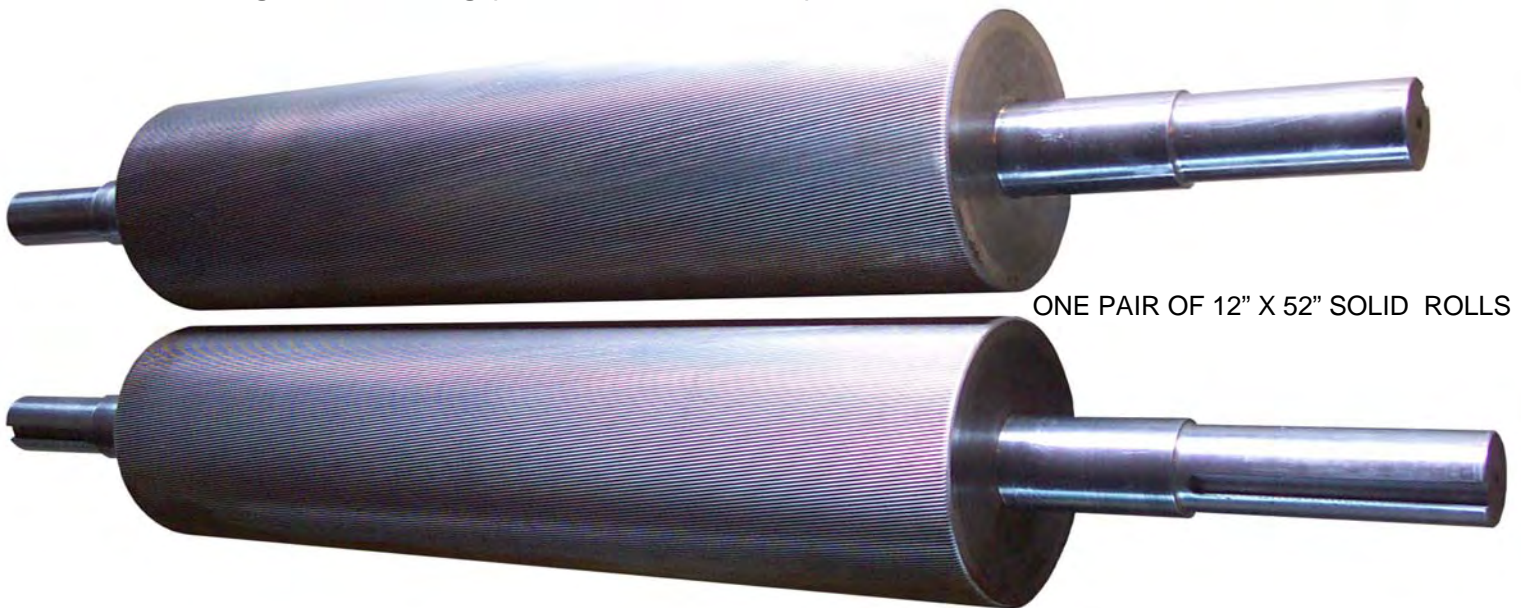
DAVIS
SINCE 1894

H. C. DAVIS SONS MANUFACTURING CO., INC.

P.O. BOX 395 BONNER SPRINGS, KANSAS 66012
PHONE: 913-422-3000 FAX: 913-422-7220 E-MAIL: INFO@HCDAVIS.COM

Our 10" x 10", 10" x 20" and 12" x 30" rolls are alloy cast with a Brinell hardness of 400. They are cast with nickel, chrome, molybdenum, magnesium and iron. Tempering (flame hardening) which warps lower quality rolls is not required. The rolls are thick enough to be re-corrugated 6 to 8 times before they must be replaced.

Our 12" x 36", 12" x 52" and 12" x 72" rolls are solid, centrifugally cast alloy that are chilled during the casting process to develop a Rockwell (C) hardness of 52 to 55.



MODEL	100A2	200A2	300A2	400A2	650A2	800A2	900A2
Capacity when grinding corn or milo to micron size of 700 for pork or pelleting	2 tons per hour	5 tons per hour	6 tons per hour	12 tons per hour	15 tons per hour	22 tons per hour	28 tons per hour
Grinding corn to 1500 micron for poultry or dairy	3 tons per hour	8 tons per hour	12 tons per hour	18 tons per hour	20 tons per hour	30 tons per hour	36 tons per hour
H.P. Required	10 H.P.	20 H.P.	30 H.P.	50 H.P.	75 H.P.	100 H.P.	150 H.P.
Roll Dimensions	10" x 10"	10" x 20"	10" x 20"	12" x 30"	12" x 36"	12" x 52"	12" x 72"
Length of Legs	17"	20"	N/A	N/A	N/A	N/A	N/A
Overall Height	5' 7"	6' 3"	5' 9"	6' 8"	6' 8"	6' 8"	6' 8"
Overall Height with	6' 10"	7' 2"	6' 8"	7' 7"	7' 7"	7' 7"	7' 7"
Overall Length	5' 4"	6' 7"	7' 4"	8' 8"	8' 10"	10' 3"	10' 3"
Overall Width	2' 4"	3' 6"	4' 0"	5' 0"	5' 11"	8' 2"	10' 4"
Weight In Pounds	1,200	2,600	4,500	8,000	9,500	14,000	17,000