

DAVIS
SINCE 1894

HORIZONTAL BATCH FEED MIXERS

H. C. DAVIS SONS MANUFACTURING CO., INC.
Manufacturers of Quality Machinery Since 1894

Davis Mixers are built with a wide variety of options to suit the needs of every customer application.

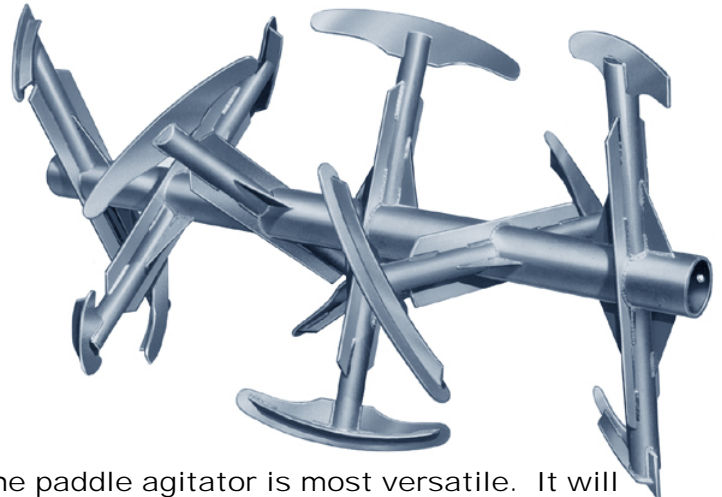
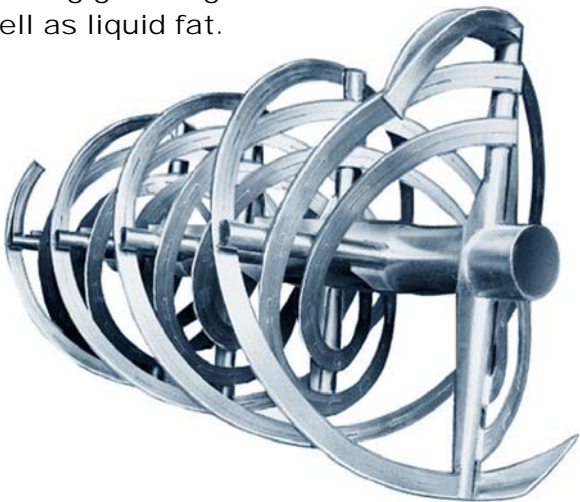
These options include:

- Agitator (ribbon or paddle)
- Drives (chain or gear box)
- Outlets (location, type, multiple)
- Inlets (lids, grate, ports)
- Scales (mechanical or load cell)
- Legs (built on, or bolt on)
- Liquid handling equipment

Contact us for more details as well as pricing.



Our double ribbon agitator is most efficient. It will thoroughly mix pork and poultry feed in only 3 minutes. It works best with feed containing ground grains and concentrates, as well as liquid fat.



The paddle agitator is most versatile. It will thoroughly mix feed with a wide variety of ingredients including roughage, whole oats, hay, ground grains, ear corn and high percentages of molasses. It's best application is for cattle, horse, dairy and sheep feeds.

DAVIS PRECISION BATCH FEED MIXERS

Designed and built for four generations by a family-owned business dedicated to product quality, reliability, longevity and...personal attention to each customer. Quality is our heritage. And, our future. Good enough won't do.

It must be right!

Davis Mixers can be built on high legs with a bagging scale installed directly on the mixer's outlet. This is most popular when mixing feed containing molasses since this type of feed is difficult to convey and store.



Model S30 Standard Duty Mixer with high legs and manual bagging scale.



Model HD30 Heavy Duty Mixer with four point electronic scale.

Davis mixers can be scale mounted. Weigh each ingredient as it is added to the mixer. It can be a four point electronic scale system, or a mechanical scale which is legal for trade.

DAVIS MIXERS ARE BUILT IN SEVERAL LEVELS OF CONSTRUCTION

Each level is built with progressively heavier steel and drive components.

STANDARD DUTY

Designed to mix feed with ingredients averaging up to 35 pounds per cubic foot. This will include grains, some concentrates, and up to 10% liquid fat.

HEAVY DUTY

Designed to mix feed with ingredients averaging up to 50 pounds per cubic foot. This will include grains, concentrates, and up to 20% liquid fat or molasses, as well as up to 10% short cut hay or silage.

SUPER DUTY

Designed to mix material with an average of up to 70 pounds per cubic foot. Super Duty Mixers are designed for full batches of concentrates and up to 30% liquid fat or molasses, as well as up to 30% short cut hay or silage.

DAVIS PRECISION BATCH FEED MIXERS

The most popular drive option for feed mixing is the foot mounted gear reducer. This drive consists of the motor coupled directly to the gearbox input shaft with a slow



Model HD40 Heavy Duty Mixer with foot mounted gear drive

speed chain drive from the gearbox output shaft to the mixer's main shaft. This drive is the most economical gear drive available and will provide many years of dependable service with minimal maintenance.

The foot mounted gear drive can be mounted on either side of the mixer or underneath, whichever is most convenient for your application.



Model SD10 Super Duty Mixer with foot mounted gear drive

Davis Bagging Hopper with 175 cubic feet of capacity



Davis Surge Tank with 290 cubic feet of capacity and horizontal discharge auger

We use only high quality, name brand drive components. Our mixer's main shafts are solid through the length of the tank.

SOME ADDITIONAL
EQUIPMENT AVAILABLE
WITH ALL DAVIS MIXERS



Davis Angled Loading Auger with 10' Overall length

DAVIS

SINCE 1894

H. C. DAVIS SONS MANUFACTURING CO., INC.

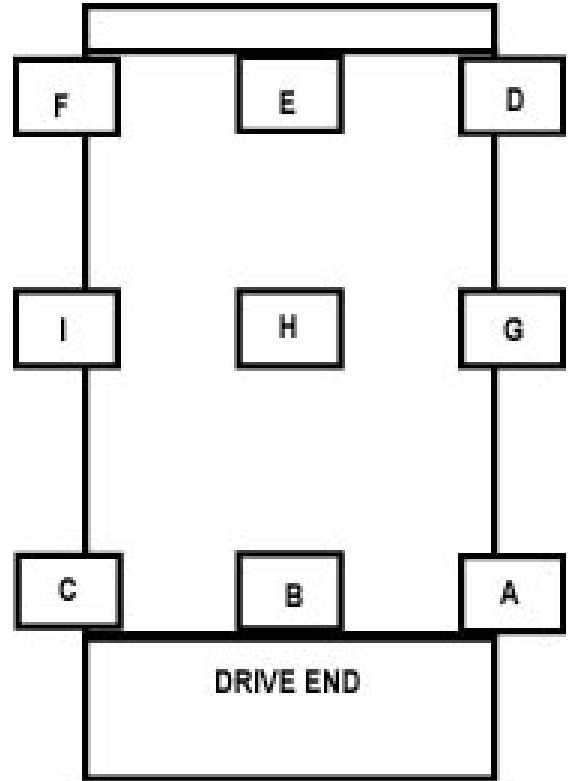
P.O. BOX 395 BONNER SPRINGS, KANSAS 66012
PHONE: 913-422-3000 FAX: 913-422-7220 E-MAIL: INFO@HCDAVIS.COM

MULTIPLE OUTLETS



Outlets show in position "E" and "D"

OUTLET LOCATIONS



MODEL	S-1	S-2	S-3	S-5	S-10	S-20	S-30	S-40	S-60	S-80	S-100	S-120	S-140	S-160	S-200
Tank Capacity															
Cubic Feet	10	17	25	41	80	122	152	225	295	383	445	513	577	662	725
Mixing Capacity:															
Cubic Feet	6	12	18	30	60	90	115	175	230	300	350	400	460	515	575
Cubic Meters	0.17	0.34	0.51	0.86	1.7	2.55	3.25	4.96	6.51	8.49	9.91	11.33	13.03	14.58	16.28
Mixing Capacity In Pounds Based On Ingredients Averaging:															
35# per cu. ft.	200	400	600	1,000	2,100	3,100	4,000	6,100	8,000	10,500	12,200	14,000	16,100	18,000	20,000
35 pounds per cubic foot represent the bulk density that our Standard Duty Mixer is designed to process. The Standard Duty Mixer can handle up to 10% liquid fat, oil or molasses.															
H. P. Required	1.5	2	2	5	10	10	15	30	40	40	50	60	75	100	125
Tank Length	3' 0"	2' 6"	3' 9"	5' 5"	6' 8"	7' 6"	8' 4"	9' 8"	10' 6"	11' 6"	12' 4"	12' 10"	13' 5"	14' 0"	14' 4"
Tank Width	1' 8"	2' 6"	2' 6"	2' 8"	3' 5"	4' 0"	4' 3"	4' 10"	5' 4"	5' 10"	6' 1"	6' 5"	6' 8"	7' 0"	7' 3"
Tank Depth	2' 2"	3' 0"	3' 0"	3' 2"	3' 11"	4' 6"	4' 9"	5' 4"	5' 10"	6' 4"	6' 7"	6' 11"	7' 2"	7' 6"	7' 9"
Loading Height	5' 4"	3' 6"	3' 6"	3' 8"	4' 5"	5' 0"	5' 3"	5' 10"	6' 4"	6' 10"	7' 1"	7' 5"	7' 8"	8' 0"	8' 3"
Outlet Size	7x7"	9x9"	9x9"	9x9"	14x16"	14x16"	14x16"	14x20"	14x20"	18x24"	24x26"	24x26"	30x26"	30x26"	30x30"
Overall Length	4' 0"	4' 3"	5' 7"	7' 3"	8' 6"	9' 8"	10' 6"	12' 2"	12' 8"	14' 5"	16' 3"	17' 3"	19' 4"	19' 11"	20' 9"
Overall Width	2' 0"	3' 9"	3' 9"	3' 11"	4' 10"	5' 7"	5' 10"	6' 6"	7' 0"	8' 0"	8' 7"	9' 0"	9' 11"	10' 1"	10' 4"
Overall Height	5' 4"	4' 6"	4' 6"	4' 10"	5' 9"	6' 4"	6' 9"	7' 4"	7' 11"	8' 7"	8' 11"	9' 5"	9' 9"	10' 3"	10' 8"
Tank Thickness	12ga	12ga	12ga	12ga	12ga	12ga	10ga	10ga	3/16"	3/16"	1/4"	1/4"	1/4"	1/4"	1/4"
Weight in pounds	500	700	800	1,200	1,700	2,300	3,000	5,000	6,000	8,500	10,000	12,000	15,000	18,000	20,000